

Prospectus

*Dedicated  
to  
Achieving  
Dreams*

Levenshulme  
HIGH SCHOOL



*Welcome  
to  
Levenshulme*





**Mr Damian Owen**  
Chief Executive Officer

**Welcome to the prospectus for Levenshulme High School. It is my privilege to associate myself with the school as Chief Executive Officer of the Trust.**

Throughout my career it has been my philosophy that every young person, whatever their background or starting point, must have the opportunities to fulfil their potential and be well-prepared to move on to the next stage of their lives with confidence and conviction. Success is achieved through the very best relationships, based on respect, dignity and kindness alongside the highest expectations of what

each young person can achieve. Levenshulme High School fully reflects this philosophy.

The school operates in an area with a highly diverse academic, social and ethnic profile, and our school achieves consistent success with all those cohorts. This success is firmly based on the Trust's values, helping us to build a school where young people are challenged to be the best they can be: to lead, to aspire, to achieve their goals. In doing so we will ensure they receive the best possible support, both academically and personally and experience a range of opportunities which allow them to fulfil their dreams, whatever they may be.



**Ms Emma Antrobus**  
Chair of the Levenshulme  
Academy Committee

**I am really proud to be the Chair of the Levenshulme Academy Committee, and to have taken a role on the Trust board to represent the school since 2014.**

I help to oversee the vision of the Trust, and how that works in school to support our young people to become the very best they can be.

This includes ensuring that we have the best teachers possible for our school, making sure we have enough money to do the things that the teachers want to do and that the young people learn as much as they can to be ready for the next stage of their lives. The Academy Committee is made up of volunteers who are parents of girls in school, staff and community representatives. We meet twice per term, get involved in school activity and try to visit whenever we can.



# Academy Headteacher

**Welcome to Levenshulme High School. It is my great privilege to be the Headteacher of this wonderful school. We are all so very proud of our outstanding Academy and feel fortunate to work alongside our talented and diverse students, staff, families, and community partners.**

Everyone's dedication to high ambition for personal and academic success means that we continue to see our school go from strength to strength. The success of students at the end of their time at high school means that we are in the top 1% of schools nationally for the academic progress they make.

Academic learning, personal development and skills for life are all strong features of what we do. We value student leadership greatly; the leadership roles span all areas of school life and provide students with essential skills to make the best possible contribution to their futures.

We know our school to be a very special place. Our ethos is rooted firmly in the co-operative values: our values, along with a commitment to kindness, shape our wonderful and dedicated school community.

We are committed to providing the very best standards of education and personal support, empowering our students to be the leaders of tomorrow, who can make a valued contribution to the 21st Century as global citizens.

We want every young person to enjoy their time at Levenshulme High School and leave with cherished memories, prepared for adulthood.

We look forward to welcoming you to our school.

**Mr. N. Johnson**  
Academy Headteacher



**Mr. N. Johnson**  
Academy Headteacher





# Here at Levenshulme High School

We inspire others and inspire ourselves  
as future leaders,  
as an ever-changing community.

We make a contribution to our school community and beyond.  
We believe that Democracy, Equity and Equality are important  
to making our voices heard.

We believe that Self-Help, Self-Responsibility and Solidarity  
are vital to making our mark.

We follow a proud tradition of people here before us.  
Together we look forward to a bright future  
built together.

We are dedicated to achieving dreams.  
We are not alone, but together as a school.



# Inclusion and SEND

**Students who have Special Educational Needs or Disability will be helped, challenged and supported throughout the curriculum by subject specialists.**

They will also be helped and supported by our dedicated Inclusion Team. This is a large team of specialist teachers and highly trained dedicated Teaching Assistants who are committed and driven to helping students in Years 7-11 overcome barriers to learning and achieve their best.

A key strand of their work is building numeracy and literacy alongside the development of social and emotional and life skills. Students may be supported in lessons, invited to join intervention groups or offered a more flexible, personalised timetable depending on individual need.

Students learning English as an additional language will be supported by specialist staff and quality resources. To help them develop their English language skills as quickly as possible they will be offered a bespoke support package to enable them to participate fully in the curriculum and wider school opportunities. All students are actively encouraged and supported to access the wealth of extracurricular activities available to enhance and build on their holistic development.

We work closely with our partner primary schools and post 16 providers to ensure students make as smooth a transition as possible to enable them to be fully equipped and successful at each stage of their schooling.

# Caring Communities of Learners

**We want all of our students to feel they belong and that they are part of a smaller family within our large school.**

Your child's first point of contact is their form tutor. There is also a Head of Progress and Pastoral Manager attached to each year group.

Your child will be a member of a vertical tutor group Monday to Thursday within one of our four Houses. This means that there will be some students from each of Years 7-11 in their form. The older students will help your child settle in to their new school. On a Friday, your child will be a member of a Focus Friday tutor group with students from their year group, allowing for the delivery of an age specific Personal Development curriculum.

# Expectations

Our strong values underpin every aspect of what we expect from our students. For students to succeed, it is important that we encourage good habits. High expectations support an ethos of learning and achievement. Employers expect excellent attendance and excellent punctuality so we need to prepare your child for their future economic well-being. Our school pledge expresses our commitment to learning. Above all, we expect everybody to be kind to each other.

# Attendance

Excellent attendance is fundamental to excellent achievement. Every day and every lesson counts. We need parents and carers to ensure that students attend every day and do not take their children out of school in term time. We operate an "Intouch" text messaging service so parents or carers will be contacted on the morning their child is absent from school to establish reasons for absence.

# Punctuality

Students should arrive no later than **8.20am**, ready to start learning at **8.30am**.

# Behaviour for Learning

**Every child has the right to learn and nobody has the right to disrupt learning.**

We expect students to take responsibility for their own behaviour for learning. We have a clear system of choices and consequences and every student is encouraged to make the right choices, which are praised and rewarded. Our merits are linked to our co-operative values.

Students receive warnings to help them manage their behaviour and settle to learning. If they continue to disrupt learning, they will receive a C3 which means a half hour detention after school the next day. More extreme behaviour may lead to a day in the Student Support room or even a suspension. Parents and carers will be contacted over concerns so that we can work in partnership to secure high standards of behaviour from all our students.







*“Pupils are very proud of their school and... their behaviour is exceptional”*

Ofsted Report  
July 2022

# Our Curriculum

**We are fully committed to providing a broad, balanced, inspiring and challenging curriculum for all our students which equips them with high quality, relevant qualifications, skills, qualities and attributes to give them choices, and a sense of ambition to enable them to make a positive contribution as a 21st century global citizen.**

Students also develop their reading, writing and communication skills, their ability to organise their work and to work cooperatively with others.

Our curriculum is structured around a one-week timetable with each day consisting of five one hour lessons.

To support with organisation, all students are given a planner and have access to a wide range of online tools. This includes free use of the Office 365 software package

Each school day begins with a tutorial session with every student having a personal tutor to provide academic and personal development support.

On Fridays, tutorial sessions are arranged within each year group to support the development of a wide range of skills, knowledge and understanding, as well as nurturing our core values.

We work as a community to support everyone's understanding and respect of the Fundamental British Values and Protected Characteristics as listed in the Equalities Act.





## Key Stage 3

At Key Stage 3, we are committed to building on the skills learned at primary school to ensure all students make rapid progress and experience a smooth transition from Key Stage 2.

In their first three years at Levenshulme High School, all students study English, maths, science, history, geography, RE, a modern foreign language (French, Spanish, German, Arabic or Urdu), technology, art and design, music, drama, ICT & computing and PE.

### Year 7

The Year 7 curriculum is made particularly special via our unique Dream Day curriculum. Each week, students spend a full day in the following curriculum areas: art, drama, design technology, music and RE exploring identity-related themes in each.

Dream Day allows students to apply themselves to a given theme for an extended period of time, working collaboratively with their peers, refining employability skills and building on their subject knowledge. The themes we have running through the Dream Day curriculum are framed by the local, national and global context, and we also provide numerous opportunities to take advantage of the excellent cultural richness on offer in Manchester.

## Years 8 and 9

In Years 8 and 9 students study the full curriculum as discrete subjects ensuring their experience remains broad and enriching. Towards the end of year 9 we have a thorough and supportive Options process to support students in making informed choices for their Key Stage 4 courses.

## Key Stage 4

In Years 10 and 11 we offer a wide range of courses alongside our core curriculum of English, maths, science, RE and PE. There is a full range of GCSE qualifications and other accredited courses to meet the needs of all our students and each course has a clear progression pathway to Post-16 Education, training or employment.

We place a strong emphasis on academic rigour within our curriculum; because of this, we are able to offer the vast majority of our students the opportunity to gain the English Baccalaureate (EBacc) suite of qualifications.

## Assessment and Reporting

Relationships with parents and carers are extremely important to us. It is vital that parents and carers have an accurate understanding of their child's progress throughout the year. All parents receive regular progress reports showing academic progress and attitudinal information as well as details on areas their child can develop.

Each year group has a Progress Evening during the year to discuss students' progress and any support needed. Additional parent events are held during the year to celebrate and support.





# Homework

**Homework is a very important part of school life, and all students will be set homework regularly. This is recorded electronically and parents can see homework tasks that have been set in the free EduLink App.**

Homework will include a range of tasks to support students in consolidating or extending their learning. All homework will have a deadline, whether in the week ahead for shorter pieces, or over a longer period of time for project based work. Time will be given in lessons for homework to be recorded into students' planners.

We encourage all students to carry out independent study and research to deepen their understanding and prepare for learning to come. There is a range of websites to support this; these include GCSEPod, MathsWatch, Educake, Seneca and Kerboodle.

Students will be issued with log-in codes for access to these sites.

In addition, free access to the Office 365 package enables communication and sharing of resources to support students beyond the classroom. These resources can be accessed any time, anywhere, and also strive to support families if they have difficulties accessing online resources

We also actively promote reading as an important part of making good progress and achieving academic success. All parents and carers are asked to encourage reading of both fiction and non fiction texts. We have a well-stocked school library with a range of books, magazines and newspapers for students to borrow.

*"Leaders have planned an extremely well-thought-out curriculum"*

**Ofsted Report**  
July 2022









# Extra-Curricular activities

**We are very fortunate to be able to offer an extensive range of extra-curricular activities.**

We encourage all students to take advantage of this offer which includes opportunities to develop leadership skills as well as participating in a range of curriculum linked and competitive activities.

We also offer a broad range of clubs that are for fun and enjoyment. We are confident there is something for everyone, for example:





# Careers Education

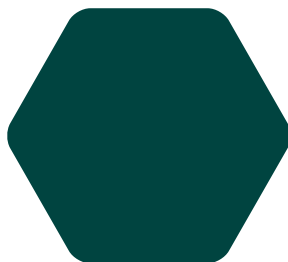
**We are committed to ensuring that our students are fully prepared for life beyond school and value the relationships we have built with colleges, universities and employers.**

We are proud of the opportunities we provide for students to participate in the wider community which help to raise their aspirations from Year 7 through to Year 11.

Our Work-related Learning Co-ordinator supports students in accessing up-to-date careers and local labour market information. All students are provided with regular opportunities to plan for and manage their futures as they engage with visiting speakers, college and careers advice workshops and independent personalised one-to-one careers advice interviews. Further information can be found on our website regarding our careers provision and Post-16 education.

# Work Experience

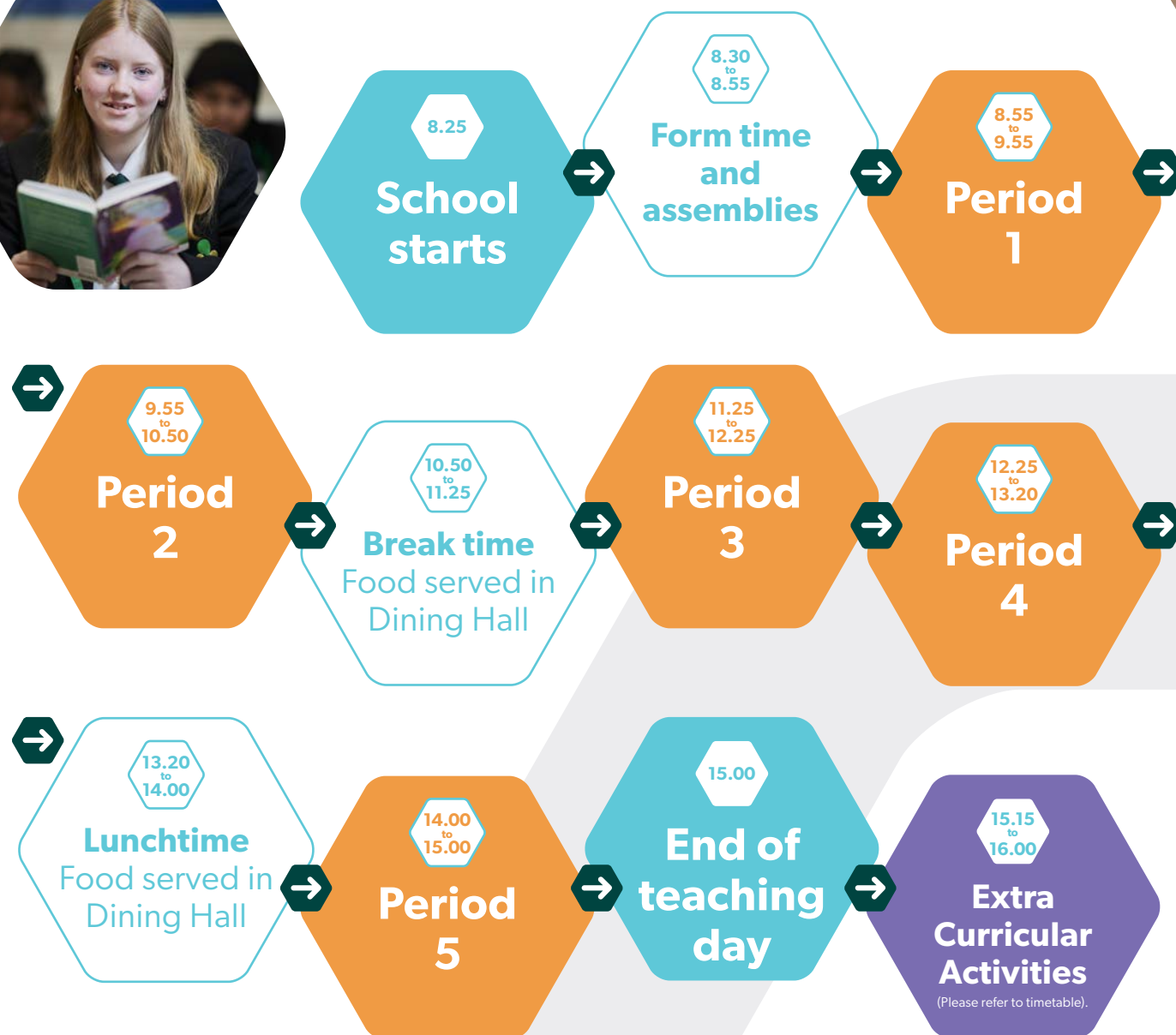
As part of our Personal Development curriculum and to further support our students in making choices about their futures beyond school, all students are supported in completing a high-quality work experience in Year 10.



*“Pupils value the support that they are given by teachers and other school staff”*

**Ofsted Report**  
July 2022

# The School Day



*“Pupils are taught to keep themselves safe through a detailed personal development programme”*

Ofsted Report  
July 2022

# Facilities

**Our school environment is one of which we are extremely proud. Some highlights are:**

- Purpose built sports facilities including our Fitness Centre, the Energy Box
- 3G Sports pitch with floodlights
- Extensive green areas for students to relax during social times.
- Modern, well equipped classrooms, science laboratories and specialist areas
- Our site is a beautiful blend of the old and the new.

# Uniform

**We expect all of our students to arrive at school in a business-like fashion, ready to learn. An important part of their Attitude to Learning is wearing the correct clothing.**

All students are expected to wear our School Uniform, details of which can be found both in school and on our website. Students are not allowed to wear any jewellery, including ear rings. A wrist watch is permitted. All students will have a swipe card which they will use as identification and to pay for meals.

# Dining

Students use their ID cards for the purchase of school meals which are credited via ParentPay. Our restaurant serves a wide range of tasty, nutritious hot meals, salads and hot and cold sandwiches.

# ParentPay

Cash and cheques are not accepted in school. Items such as school meals, trips, lockers and items of uniform etc. are all paid for via ParentPay. Parents/ carers will be given full instructions and support to assist them in setting up and crediting their accounts prior to their child joining school.

# Lockers

Lockers are available for students to rent to keep their belongings safe and secure in school.

# Website

All letters which are sent to parents and carers can also be accessed via our website. It also contains a wide range of information relating to school and is updated regularly to keep everybody informed of our latest news, achievements and school notices. There are also photographs and video clips of school performances and events.





# School Values and Student Leadership



# Our Values

Self-help

Self-responsibility

Democracy

Equality

Solidarity

Equity

**As members of the Schools' Co-operative Society we have their values at the heart of our ethos and culture.**

These values help to secure an inclusive and supportive environment for staff and students, with a very strong emphasis on personal and social responsibility complemented by respect, tolerance and kindness.

Student leaders play a vital part in our school, making a real difference to many aspects of life both inside and outside the classroom. Students have the opportunity to take on leadership roles across the full range of school life – for example in individual subjects, extra-curricular clubs, the House system, anti-bullying, mindfulness and charity work. Over 50% of students had a leadership role during last academic year and they are genuinely empowered to drive change and improvement.

*“Leaders have an extremely clear and ambitious vision for the school”*

**Ofsted Report**  
July 2022

## How to apply

If you would like your child to come to Levenshulme High School you should follow the Manchester City Council application procedure. This can be found on their website [www.manchester.gov.uk/admissions](http://www.manchester.gov.uk/admissions). Details will also be issued to you through your child's primary school.

## Contact us

Levenshulme High School, Crossley Road,  
Levenshulme, Manchester, M19 1FS

**Tel:** 0161 224 4625

**Fax:** 0161 256 1170

**Email:** [office@levenshulmehigh.co.uk](mailto:office@levenshulmehigh.co.uk)

**Website:** [www.levenshulmehigh.co.uk](http://www.levenshulmehigh.co.uk)